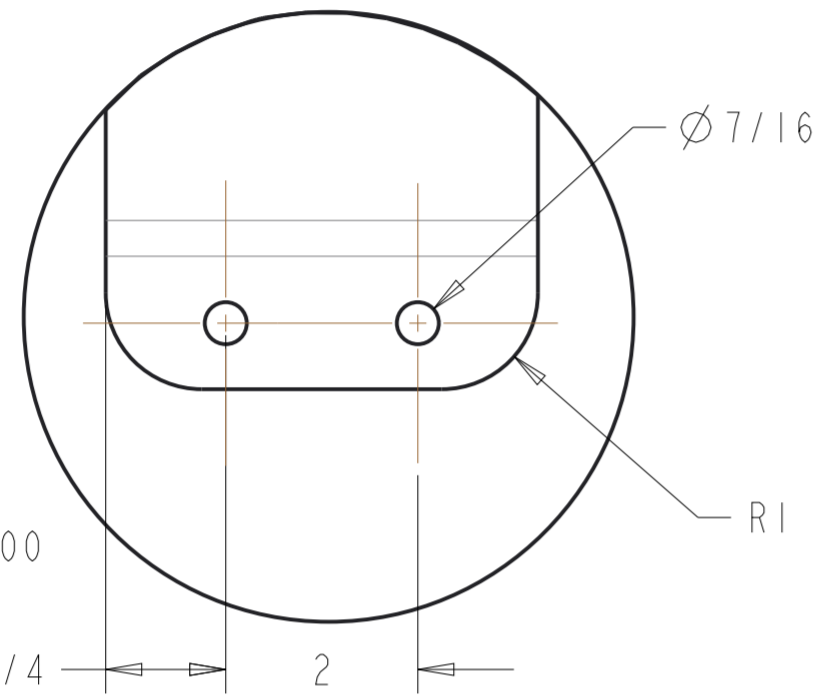


REV.	CHANGE DESCRIPTION	DATE	NAME	APPROVED
2	SE AGREGA LOS TORNILLOS DE SUJECIÓN	28-06-16	M.E.R.	J.P.F.

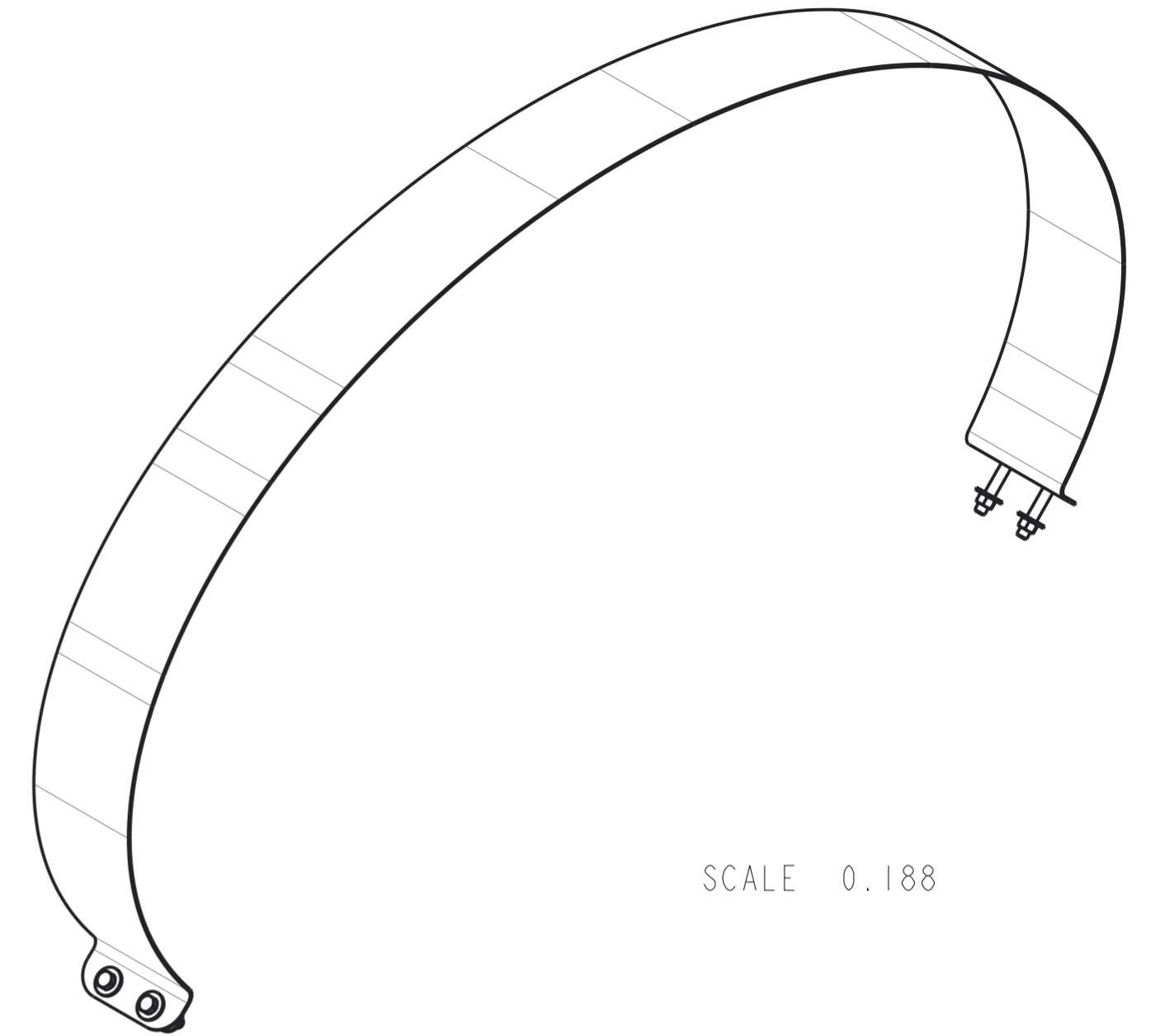
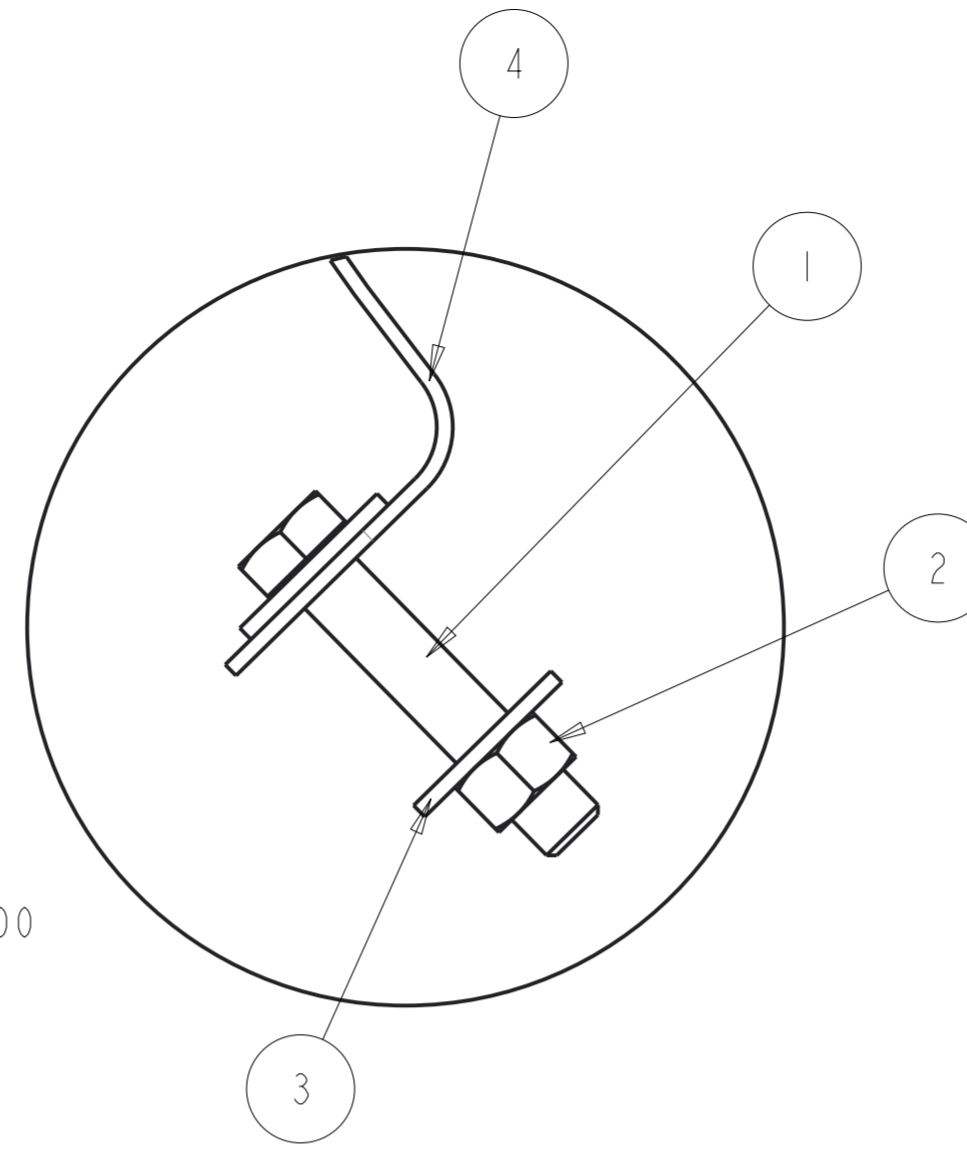
NOTES:

- 1-MATERIAL: CARBON STEEL A36
- 2-PAINTING FIRST WITH PRIMER EPOXIC ANTICORROSIVE AND THEN PAINTING WITH BLACK GLAZE
- 3-GENERAL TOLERANCES:

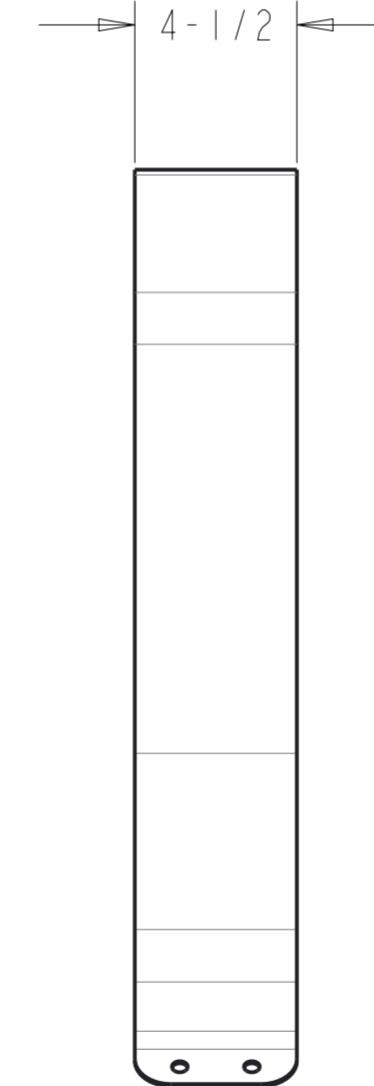
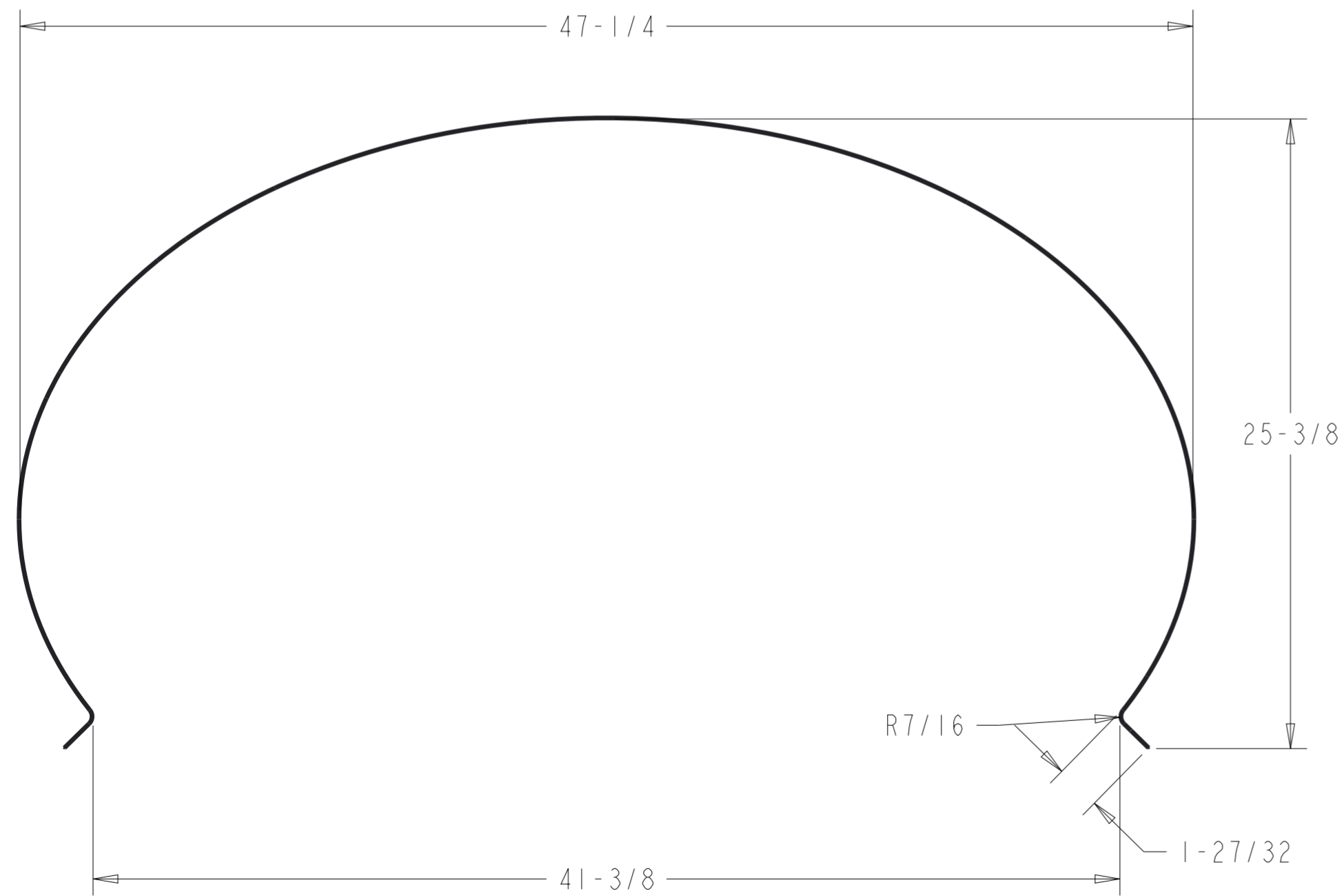
DECIMAL: $\pm 0.125"$
 FRACTION: $\pm 1/4"$
 ANGLE: $\pm 1^\circ$



SCALE 1.000



SCALE 0.188



No.	CANT	CODIGO	DESCRIPCION	MATERIAL	OBSERVACIONES
4	1	R-E-1178	BAND 335 ELLIPTICAL TANK	CARBON STEEL A-36	SHEET 16 GA
3	8		WASHER FOR 3/8-16 UNC	STEEL	
2	4		NUT 3/8-16 UNC	STEEL	
1	4		BOLT HEXAGONAL CAP 3/8-16 UNC	STEEL	

ESCALE: 0.19	SIZE: A2	DESIGNER BY: Ing. M. Elias	DATE: Jun-28-16	INNOVATION AND DEVELOPMENT CENTER 	MATERIAL: CARBON STEEL A-36
UNITS: INCH	PROJECTION: FIRST ANGLE	REVIEWED BY: Ing. F. Guadarrama	DATE:		PROJECT: ELLIPTICAL TANKS USA
		APPROVED BY: Ing. Joel Pérez	DATE:		REFERENCE DRAWING:
		RELEASED BY:	DATE:	DESCRIPTION: BAND 335 ELLIPTICAL TANK	CODE: R-E-1178
					REV: 2